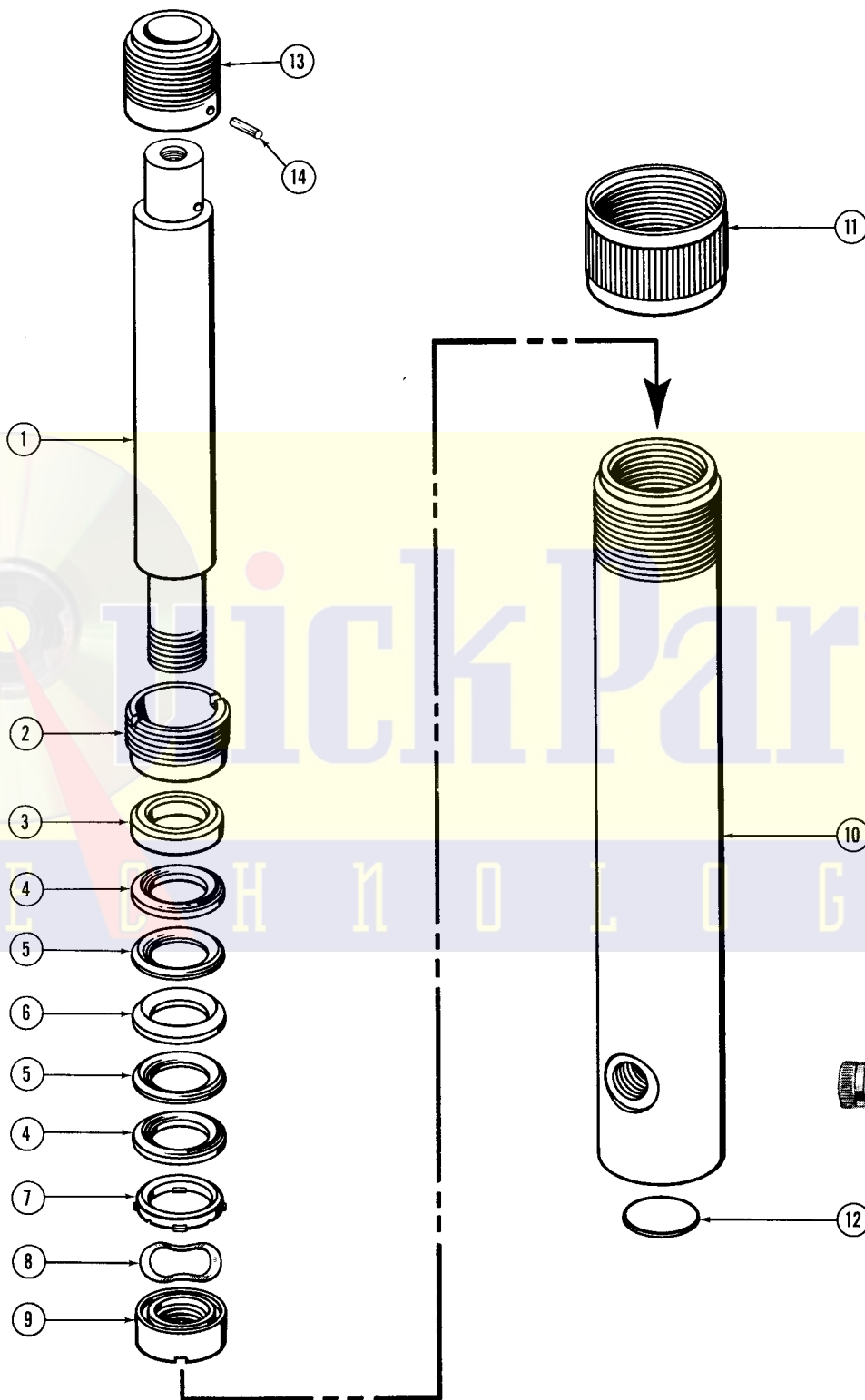


Master Copy

BLACKHAWK®

REPAIR PARTS SHEET
PORTO-POWER RAM
MODEL R-325A
RATED CAPACITY
2-TON
Sheet No. S-105
Issued Dec., 1957
Supersedes Sheet No. 1088



REPAIR PARTS SHEET FOR R-325A HYDRAULIC BANTAM PORTO-POWER RAM

Parts List on Reverse Side

PARTS LIST FOR MODEL R-325A

Item No.	Part No.	Part Name	No. Req.
1	R325.40	Plunger	1
2	R325.44	Plunger Stop Ring	1
3	R325.71	Disc	1
4	R325.41	Plunger Cup	2
5	R325.316	Cup Separator	2
6	B178.041	Plunger Cup	1
7	R325.43	Spreader	1
8	R325.280	Spring Washer	1
9	R325.35	Plunger Cup Retaining Nut	1
10	R325.05	Base	1
11	R325.271	Thread Protector	1
12	R325.26	Name Plate	1
13	R540.45	Saddle	1
14	R540.61	Pin	1
SUB-ASSEMBLY			
R325.40A Plunger (Items 1, 13 & 14)			

NOTE: No orders for parts can be filled unless both model and serial number of equipment is given.

GUARANTEE

All Blackhawk Porto-Power Pumps and Rams are guaranteed against defects in workmanship and material. In case of such defects, repairs and adjustments will be made on a no charge basis, providing the ram, pump or component parts are returned to one of our Authorized Repair Service Stations or the Blackhawk Service Station, 5054 W. State St., Milwaukee 8, Wis., by prepaid transportation for inspection. Guarantee does not cover rams and pumps worn out in service, damaged through abuse, overloading or accident. This Guarantee is VOID if anything but BLACKHAWK HYDRAULIC JACK OIL is used in the unit. Do NOT USE brake fluids.

TECHNOLOGY

A Network of AUTHORIZED REPAIR STATIONS serves Porto-Power Users worldwide

For quality workmanship with genuine Porto-Power parts select an authorized Blackhawk Service Station for your repair work. Only repairs performed by an authorized service station are backed with full factory guarantee. The Classified Section in your Phone Book lists your nearest Authorized Service Station.

BLACKHAWK MFG. CO. - - - MILWAUKEE 46, WIS.