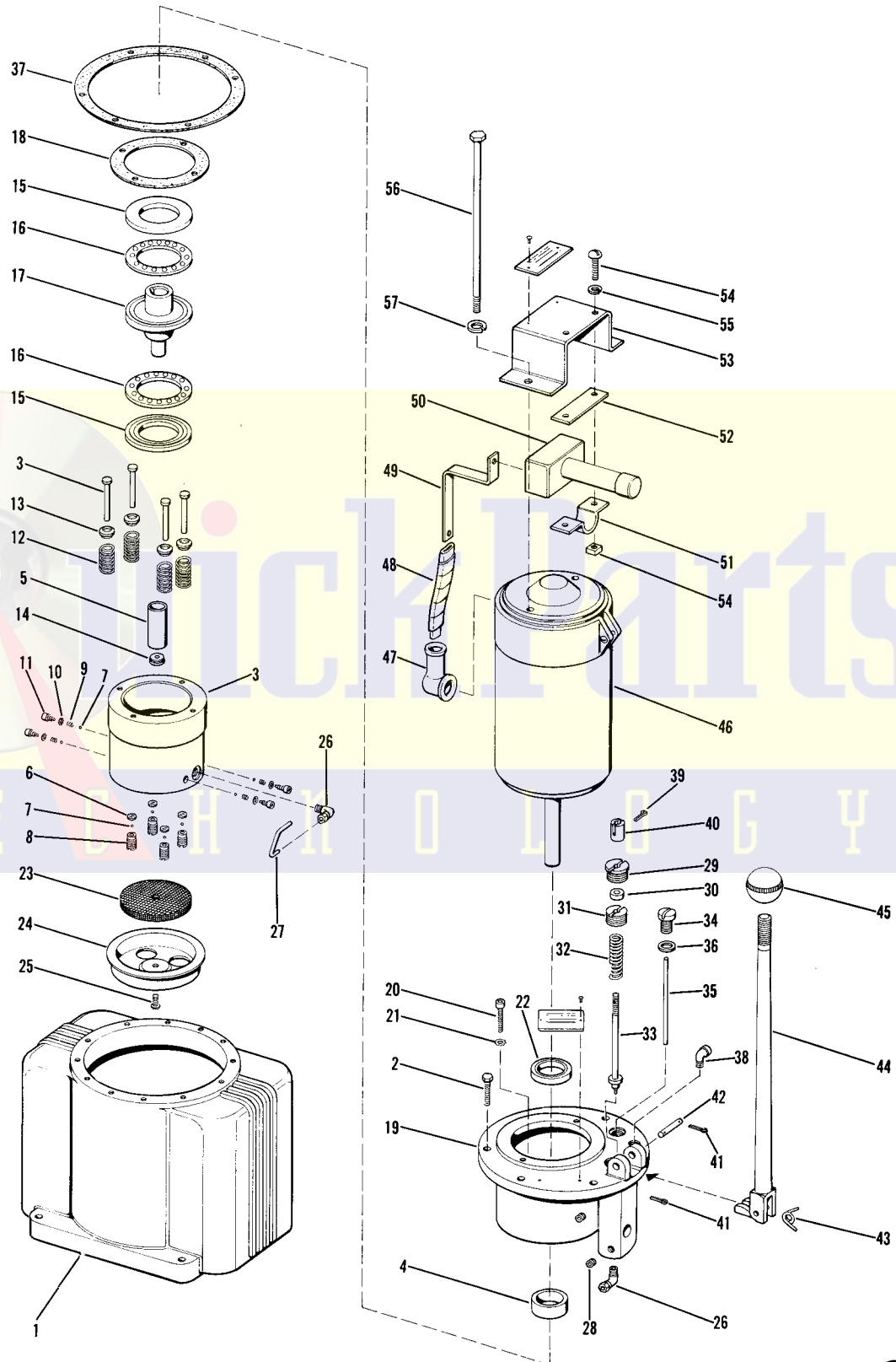


Master Copy

BLACKHAWK®

REPAIR PARTS SHEET
PORTO POWER PUMP
MODEL P247, P248
P447 & P448

Sheet No. S.189
Issued Jan. 1961



Parts List on Reverse Side



PARTS LIST FOR MODEL P247, P248, P447 and P448

Item No.	Part No.		Description	No. Req.
	P247 P447	P248 P448		
1	P60.05	P60.05	Pump Base	1
2	P171.172	P171.172	Cap Screw	6
26	X34	X34	90° Male Elbow	2
36	B159.167	B159.167	Filler Plug Gasket	1
38	P247.291	P247.291	Street Elbow	1
41	1.58	1.58	Cotter Pin	2
42	P247.201	P247.201	Pin	1
43	P248.183	P248.183	Spring	1
44	A119.318	A119.318	Lever	1
45	P60.308	P60.308	Knob	1
46	P247.259	P247.259	Motor, 6 Volt (Includes Items 56 and 57) ..	1
	A201.259	A201.259	Motor, 12 Volt (Includes Items 56 and 57) ..	1
	P247K	P248K	REPAIR KITS	
			Repair Kit (Includes Items 6, 7, 9, 10, 12, 18, 22, 23, 24, 25, 27, 29, 30, 31, 32, 33, 37, 39 and 40)	
	P247KS	P247KS	Switch Kit (Includes Items 47 through 55)	
			REBUILT PUMP ADAPTER ASSEMBLIES	
			The following rebuilt pump adapter assemblies are available on an Exchange basis and are covered by Blackhawk's full factory warranty.	
	P247R	P248R	Rebuilt Pump Adapter Assembly (Includes Items 3 through 37)	

IMPORTANT: ITEMS NOT LISTED BY PART NUMBER ARE AVAILABLE ONLY IN REBUILT PUMP ASSEMBLY OR JACK/SAVER REPAIR KIT. SEE LIST ABOVE.

NOTE: Orders for parts cannot be filled unless both model and serial number stamped on side of base are given.

GUARANTEE

Blackhawk guarantees its Hand Jacks, Service Jacks and Porto-Power against defects in workmanship and material for 90 days from date of delivery to the user. Only exception is Porto-Power chain, which follows the trade custom of its manufacturers and cannot be guaranteed.

When question of warranty arises, the user should send his unit to the nearest Blackhawk Franchised Service Depot for inspection, transportation to be prepaid and evidence of delivery date furnished.

If the difficulty comes under the terms of our guarantee, we will repair or replace parts affected and return prepaid. Our guarantee does not cover ordinary wear and tear, abuse, misuse, overloading, altered products or use of improper fluid.

A Network of FRANCHISED SERVICE DEPOTS serves Blackhawk Users worldwide

For quality workmanship with genuine Blackhawk parts select a franchised Blackhawk Service depot for your repair work. Only repairs performed by a franchised service depot displaying an official franchise service depot sign shown on the reverse side of this page, are backed with full factory guarantee. The Classified Section in your Phone Book lists your nearest Franchised Service Depot.