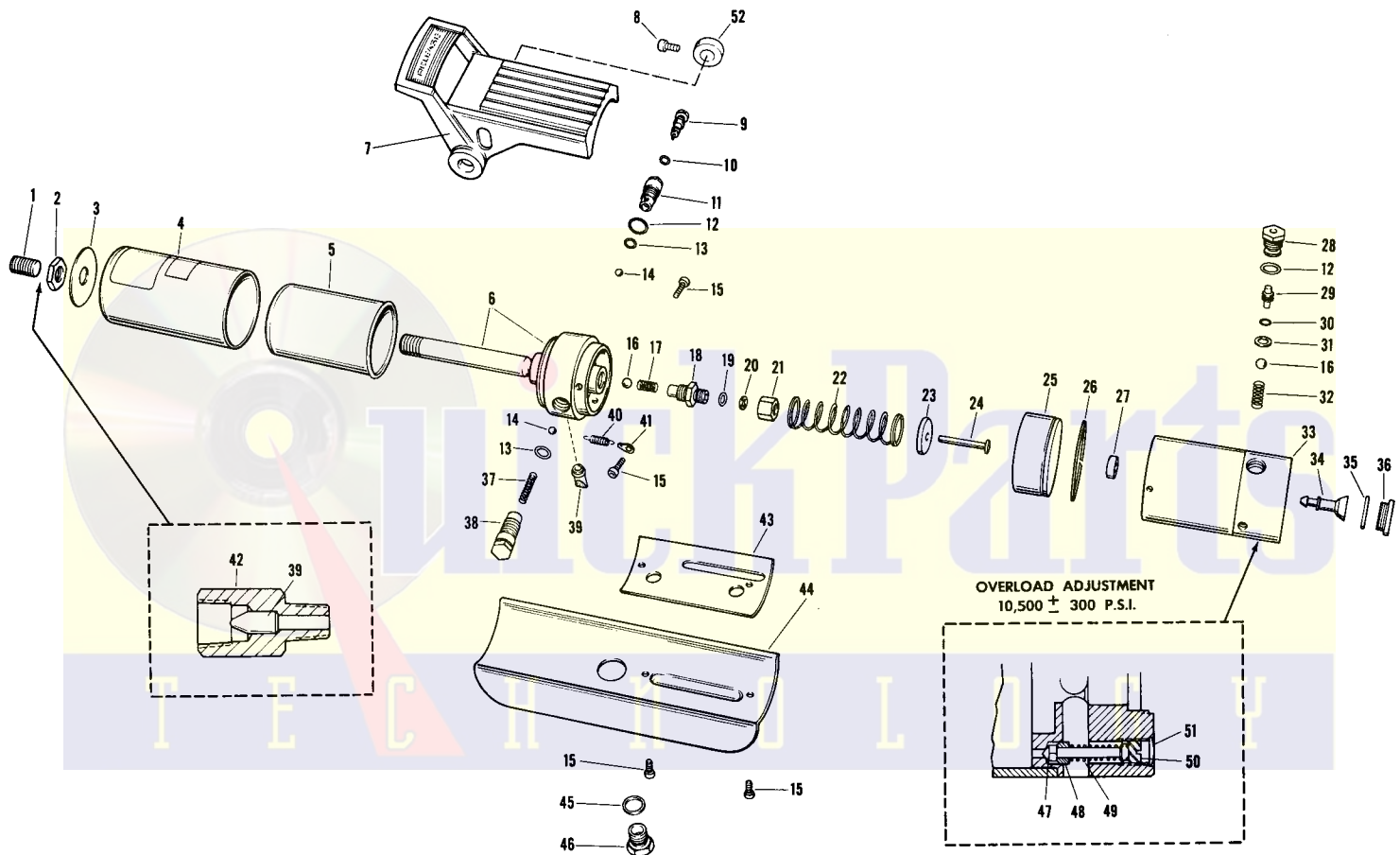


BLACKHAWK

Porto-Power
Body Repair Equipment

Repair Parts Information

Serial Code "D"
Porto-Matic
Air-Hydraulic Pump Set
MODEL P-707 & S-202
Issued February, 1968



FOR QUALITY WORKMANSHIP AND GENUINE BLACKHAWK PARTS, SELECT A BLACKHAWK FRANCHISED SERVICE DEPOT FOR YOUR REPAIR NEEDS. THE CLASSIFIED SECTION IN YOUR PHONE BOOK LISTS YOUR NEAREST FRANCHISED SERVICE DEPOT.

USE ONLY LX-21 JACK OIL AND GENUINE FACTORY PARTS. USE OF OTHER HYDRAULIC FLUIDS OR NON-GENUINE PARTS VOIDS WARRANTY.

NEVER USE BRAKE FLUID.

REPAIR PARTS LIST FOR MODEL P-707 & S-202

Item No.	Part No.	No. Req.	Description	Item No.	Part No.	No. Req.	Description
1	R515.245-1	1	Plug	29	B727.395	1	Throttle Stem
2	B724.123	1	Nut	*30	B744.503	1	"O" Ring
3	H114.026	1	Name Plate	*31	B860.066	1	"Poly" Washer
4	B725.162	1	Cover	*32	B936.110	1	Spring
5	B708.025	1	Reservoir	33	G497.900	1	Air Body & Sleeve
6	J442.900	1	Hyd. Body & Pipe	*34	B741.579	1	Exhaust Valve Stem
	B707.268	1	Pipe Only (Torque 50-70 Ft. Lbs.)	*35	BL30126	1	"O" Ring
7	J879.218	1	Treadle	36	B743.006-1	1	Air Plug
8	F88.028	1	Set Screw (P707D)	*37	B723.110	1	Spring
	F342.028	2	Screw (P707C)	38	B722.302	1	Treadle Bearing Screw
	B715.087	1	Screw (P707A-B)	39	E394.018	2	Filter
9	J878.010	1	Release Spindle (P707D)	40	B720.110	1	Spring
	F332.010	1	Release Spindle (P707C)	41	B721.558	1	Lug
	B706.010	1	Release Spindle (P707A-B)	42	FZ-1053	1	Adaptor w/Filter
*10	AJ100.312	1	"O" Ring	43	C323.037	1	Gasket
11	B719.011	1	Gland Nut (Torque 10-15 Ft. Lbs.)	44	F333.005	1	Base
*12	B839.503	2	"O" Ring	*45	B159.167	1	Gasket
*13	B710.503	2	"O" Ring	46	CB9.185-2	1	Plug
*14	1.16	2	7/32" Ball	47	E735.416	1	Valve Stem
15	B733.087	4	Screw	48	E724.039	1	Sleeve
*16	S1.16	2	5/16" Ball	49	E734.183	1	Spring
*17	B726.110	1	Spring (insert large coil into item 18)	50	E726.028	1	Adjusting Screw
18	B730.050	1	Body (Torque 35-45 Ft. Lbs.)	51	E725.006	1	Overload Seal
*19	B709.503	1	"O" Ring	52	J877.039	1	Release Bushing
*20	B712.562	1	Washer (hide side away from Item 19)	‡53	Z913	1	Hose w/ZH604 Coupler
21	B705.021	1	Nut (Torque 5-10 Ft. Lbs.)	‡54	Z1604	1	Spee-D-Reducer
22	B704.110	1	Spring	‡55	ZH604	1	Coupler (Hose End)
23	B703.108	1	Washer	‡56	ZR400	1	Coupler (Ram End)
24	B702.040	1	Plunger	‡57	LX21	24	cu. in. Blackhawk Oil
25	B729.578	1	Air Piston				
26	B713.491	1	Piston Ring				
*27	F15.808	1	Seal (P707B-C-D)				
	B742.808	1	Seal (P707A)				
28	C801.035	1	Body (P707C-D)				
	B728.035	1	Body (P707A-B)				

NOTE: 105 Lbs. PSI line pressure required at air inlet for capacity operation.

‡Items not shown.

For economy repair use Jack/Saver Kit P707K-3.

Items included in kit are marked with asterisk (*).

NOTE: Orders for parts cannot be filled unless both model and serial number with prefix (imprinted on nameplate) are given.

WARRANTY

Blackhawk warrants its products against defects in workmanship and materials for 90 days from date of delivery to user. Chain is not warranted. Warranty does not cover ordinary wear and tear, abuse, misuse, overloading, altered products or use of improper fluid.

WARRANTY RETURN PROCEDURE

When question of warranty claim arises, the user should send his unit to the nearest Blackhawk Franchised Service Depot for inspection, transportation to be prepaid and evidence of purchase date furnished. If the claim comes under the terms of our warranty, the Franchised Service Depot will REPAIR OR REPLACE PARTS AFFECTED and return prepaid.

BLACKHAWK®

BLACKHAWK MFG. CO., MILWAUKEE, WIS. 53227 DIVISION OF APPLIED POWER INDUSTRIES, INC.