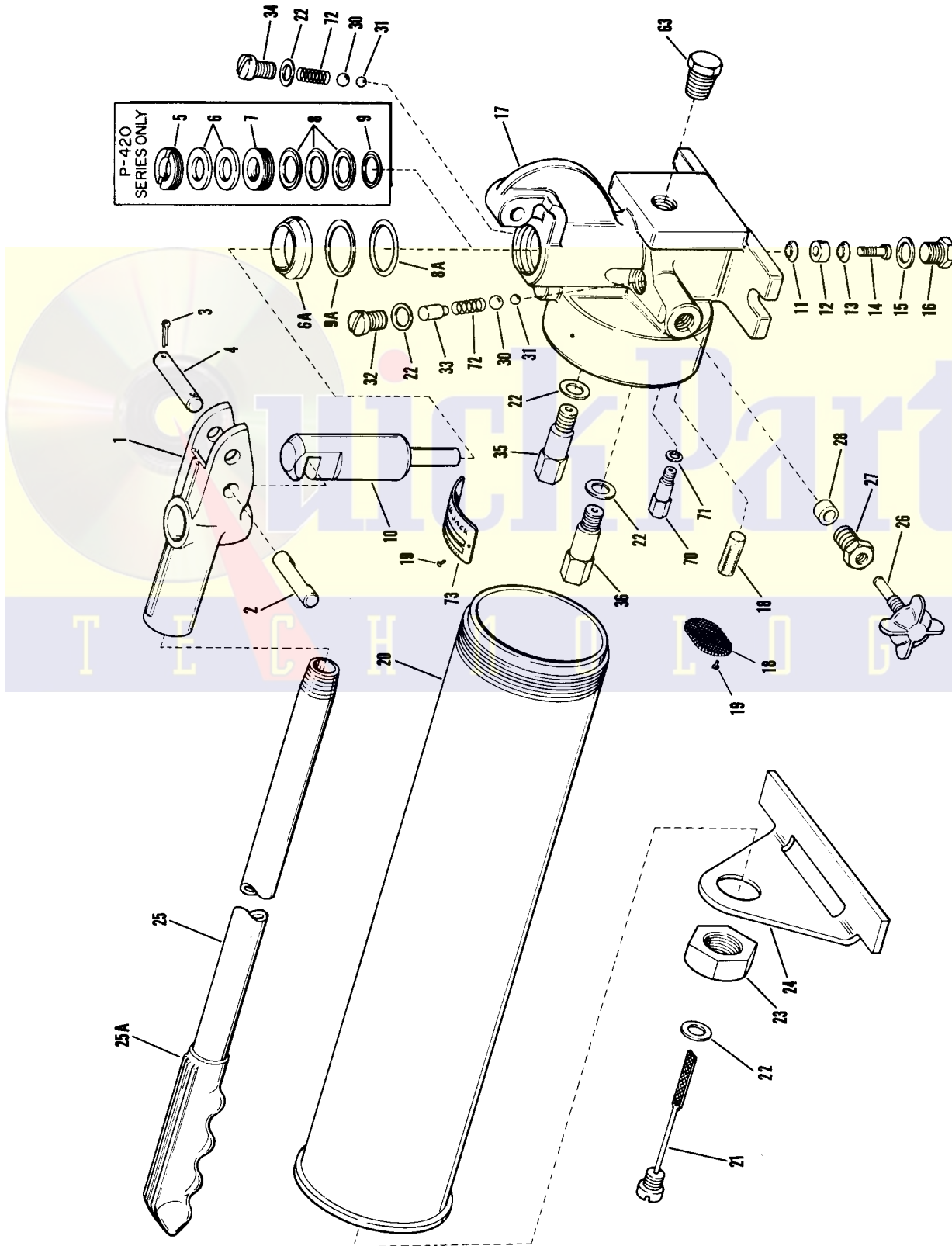


# BLACKHAWK®

Master Copy  
repair parts

## MODELS P-420 & P-420-1 PORTO-POWER PUMP (Old P-80)

Automatic Two-Speed Pump  
Rated Capacity -- 10,000 p.s.i. Full Load  
875 p.s.i. Speed Pump Max. By-pass. Oil Cap. 140 cu."  
Supersedes Sheet No. S-241



# REPAIR PARTS LIST FOR MODELS P-420 & P-420-1

Item No.	Part No. P420	No. Req.	Part No. P420-1	No. Req.	Description	Item No.	Part No. P420	No. Req.	Part No. P420-1	No. Req.	Description
1	B113.060	1	B113.060-1	1	Beam	27	MJ11-1	1	MJ11-1	1	Packing Nut
2	P75.57	1	P75.57	1	Cross Pin	*†28	B217.074	2	B217.074	2	Packing
*†3	S1.58	2	S1.58	2	Cotter Pin	*†30	S1.16	2	S1.16	2	Ball
4	P76.63	1	P76.63	1	Beam Pin	*†31	1.16	2	1.16	2	Ball
5	B254.054	1			Packing Nut	32	S4.185	1	S4.185	1	Valve Plug
*6	B252.075	2			Packing	33	B248.186	1	B248.186	1	Check Ball
†6A			C912.044	1	Wiper Ring						Spacer
7	B255.054	1			Packing Spacer	34	B249.185	1	B249.185	1	Valve Plug
*8	B251.053	3			Pump Cup	35	P182.190-2	1	P182.190-2	1	By Pass Valve
†8A			BL30155	1	"O" Ring	36	P182.190-2	1	P182.190-2	1	Safety Valve
9	B253.052	1			Spreader	63	R515.245	1	R515.245	1	Shipping Plug
†9A			C914.317	1	Back Up Washer	70			C949.900	1	Relief Valve
10	B246.051	1	C910.051	1	Pump Plunger	71			S3.37	1	Gasket
*11	B119.317	1	F11.52	1	Spreader	72	S1.183	2	S1.183	2	Spring
*†12	F11.53	1	F11.53	1	Pump Cup	73	B155.026	1	B155.026	1	Name Plate
13	F11.52	1	F11.52	1	Spreader	**	P75.26-1	1	P75.26-1	1	Decal
14	P181.128	1	P181.128	1	Nylock Screw	*	P80K-3	†	P420K-1		Jack/Saver Kit
*†15	S15.167	1	S15.167	1	Gasket	<p>NOTE: B250.005 BASE IS NO LONGER AVAILABLE. If Base, B250.005 is not reusable replace with part numbers C948.005, Base, C912.044 Wiper Ring, BL30155 "O" Ring, C914.317 Back Up Washer, and C910.051 Pump Plunger.</p> <p>*†For Economy Repair use Jack/Saver Kits as listed. P80K-3 includes items marked * P420K-1 includes items marked † If Model Number not identified use UNIVERSAL KIT P420K-3 which includes items marked * and †.</p> <p>**ITEM NOT SHOWN</p>					
16	B247.185	1	B247.185	1	Plug						
17	Note		C948.005	1	Base						
18	P16.18	1	M73.18	1	Screen						
19	B156.003	4	B156.003	2	Drive Screws						
20	B245.900	1	B245.900	1	Reservoir						
21	A63.900	1	A63.900	1	Filler Plug						
*†22	B159.167	5	B159.167	5	Gasket						
23	B256.123	1	B256.123	1	Jam Nut						
24	B242.267	1	B242.267	1	Pump Rest						
25	B524.900	1	B524.900	1	Handle						
25A	B525.550	1	B525.550	1	with Grip						
26	B109.900	1	B109.900	1	Handle Grip Only						
					Release Valve Assembly						

**NOTE:** Orders for parts cannot be filled unless both model and serial number with prefix imprinted on nameplate are given.

## FRANCHISED SERVICE DEPOTS



For quality workmanship with genuine Blackhawk parts select a Franchised Blackhawk Service Depot for your repair work. Only repairs performed by a Franchised Service Depot displaying this official sign are backed with full factory guarantee. The Classified Section in your Phone Book lists your nearest Franchised Service Depot.

## GUARANTEE

Blackhawk guarantees its Products against defects in workmanship and materials for 90 days from date of delivery to the user. Only exception is chain, which follows the trade custom of its manufacturers and cannot be guaranteed. When question of warranty arises, the user should send his unit to the nearest Blackhawk Franchised Service Depot for inspection, transportation to be prepaid and evidence of purchased date furnished. If the difficulty comes under the terms of our guarantee, the Franchised Service Depot will repair or replace parts affected and return prepaid. Our guarantee does not cover ordinary wear and tear, abuse, misuse, overloading, altered products or use of improper fluid.

PARTS, SERVICE INFORMATION AND THE ADMINISTRATION OF FRANCHISED SERVICE DEPOTS FOR BLACKHAWK PRODUCTS IS PROVIDED BY—

# BLACKHAWK SERVICE

MILWAUKEE, WISCONSIN 53246

DIVISION OF APPLIED POWER INDUSTRIES, INC.

Please direct all Service Correspondence to BLACKHAWK SERVICE