

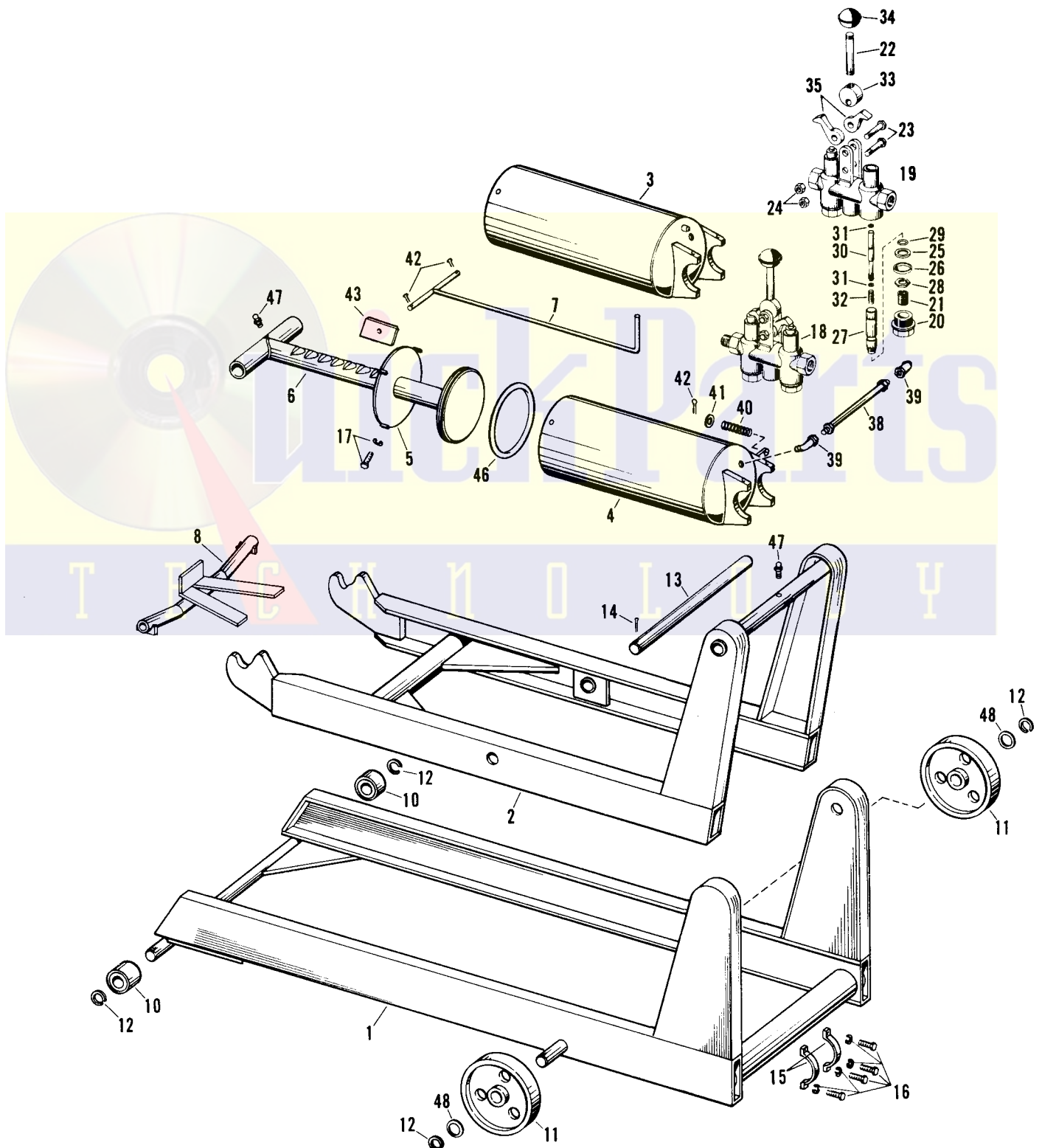
**BLACKHAWK®**

*Master Copy*  
**repair parts**

**MODELS ML-40 & ML-40-2  
MOBILE LIFT**

**CAPACITY — 1¾ TONS**

Issued September, 1965 — Supersedes S-158



# REPAIR PARTS LIST FOR MODELS ML-40 & ML-40-2

Item No.	ML-40 Part No.	ML-40-2 Part No.	No. Req.	Description	Item No.	ML-40 Part No.	ML-40-2 Part No.	No. Req.	Description
1 & 2			1	Frame & Lift Arm Assembly (Not available as Service Parts)	27	E875.010	E875.010	2	Spindle
					28	E872.055	E872.055	2	Nut
					*29	B710.503	B710.503	2	"O" Ring
					30	E877.010	E877.010	2	Spindle
3	ML40.902	E889.900	1	Tank Assembly (Right)	*31	B744.503	B744.503	4	"O" Ring
4	ML40.903	E890.900	1	Tank Assembly (Left)	32	E876.183	E876.183	2	Spring
5	ML40.904		2	Tank Cover Assembly	33	E880.350	E880.350	1	Cam
6	ML40.905		2	Piston Assembly	34	E882.308	E882.308	1	Knob
6		E891.900	2	Piston & Cover Assembly (Includes Item 43)	35	E883.103	E883.103	2	Rocker Arm
					38	E904.646	E904.646	1	Hose
					39	E905.291	E905.291	2	Elbow
7	ML40.906	E893.149	1	Lock Lever Assembly	40	E906.183	E906.183	1	Spring
8	E894.038	E894.038	1	Adapter	41	E907.108	E907.108	1	Washer
10	E896.106	E896.106	2	Wheel (Front)	42	E908.061	E908.061	3	Cotter Pin
11	E897.106	E897.106	2	Wheel (Rear)	43	ML40.59	E891.900	2	Safety Latch
12	E898.044	E898.044	4	Retaining Ring			See Item #6		
13	E899.104	E899.104	1	Shaft	44	ML40.60		2	Pin
14	E900.061	E900.061	1	Cotter Pin	45	ML40.61		4	Spacer
15	ML40.47	E901.017	4	Strap	*46	E912.041	E912.041	2	"O" Ring
16	ML40.48	E902.028	8	Screw & Washer	47	E913.096	E913.096	3	Grease Fitting
17	ML40.48	E911.028	8	Screw & Washer for Cylinder Cover	48	E189.108	E189.108	2	Washer
18	E886.900	E886.900	1	Valve Assembly	†50	B155.026-1	B155.026-1	1	Nameplate
19	E878.580	E878.580	1	Valve Body	†51	A559.026	A559.026	1	Decal (Release Brakes)
20	E870.020	E870.020	2	Valve Cap	†52	A536.026	A536.026	2	Decal (ML-40)
21	E871.183	E871.183	2	Spring	†53	E704.026	E704.026	1	Decal (Caution)
22	E881.157	E881.157	1	Lever	†54	W78.03	W78.03	2	Drive Screw
23	E879.028	E879.028	2	Bolt	†Item not shown.  *For economy repair use Jack/Saver Kit ML40K. Items included in kit marked with an asterisk (*).				
24	E885.055	E885.055	2	Nut					
25	E874.071	E874.071	2	Disc					
26	E873.071	E873.071	2	Disc					

**NOTE:** Orders for parts cannot be filled unless both model and serial number with prefix imprinted on nameplate are given.

## FRANCHISED SERVICE DEPOTS



For quality workmanship and genuine Blackhawk parts select a Franchised Blackhawk Service Depot for your repair work. Only repairs performed by a Franchised Service Depot displaying this official sign are backed with full factory guarantee. The Classified Section in your Phone Book lists your nearest Franchised Service Depot.

## GUARANTEE

Blackhawk guarantees its Products against defects in workmanship and materials for 90 days from date of delivery to the user. Only exception is chain, which follows the trade custom of its manufacturers and cannot be guaranteed. When question of warranty arises, the user should send his unit to the nearest Blackhawk Franchised Service Depot for inspection, transportation to be prepaid and evidence of purchased date furnished. If the difficulty comes under the terms of our guarantee, the Franchised Service Depot will repair or replace parts affected and return prepaid. Our guarantee does not cover ordinary wear and tear, abuse, misuse, overloading, altered products or use of improper fluid.

PARTS, SERVICE INFORMATION AND THE ADMINISTRATION OF FRANCHISED SERVICE DEPOTS FOR BLACKHAWK PRODUCTS IS PROVIDED BY —

# BLACKHAWK SERVICE

MILWAUKEE, WISCONSIN 53246

DIVISION OF APPLIED POWER INDUSTRIES, INC.

Please direct all Service Correspondence to BLACKHAWK SERVICE