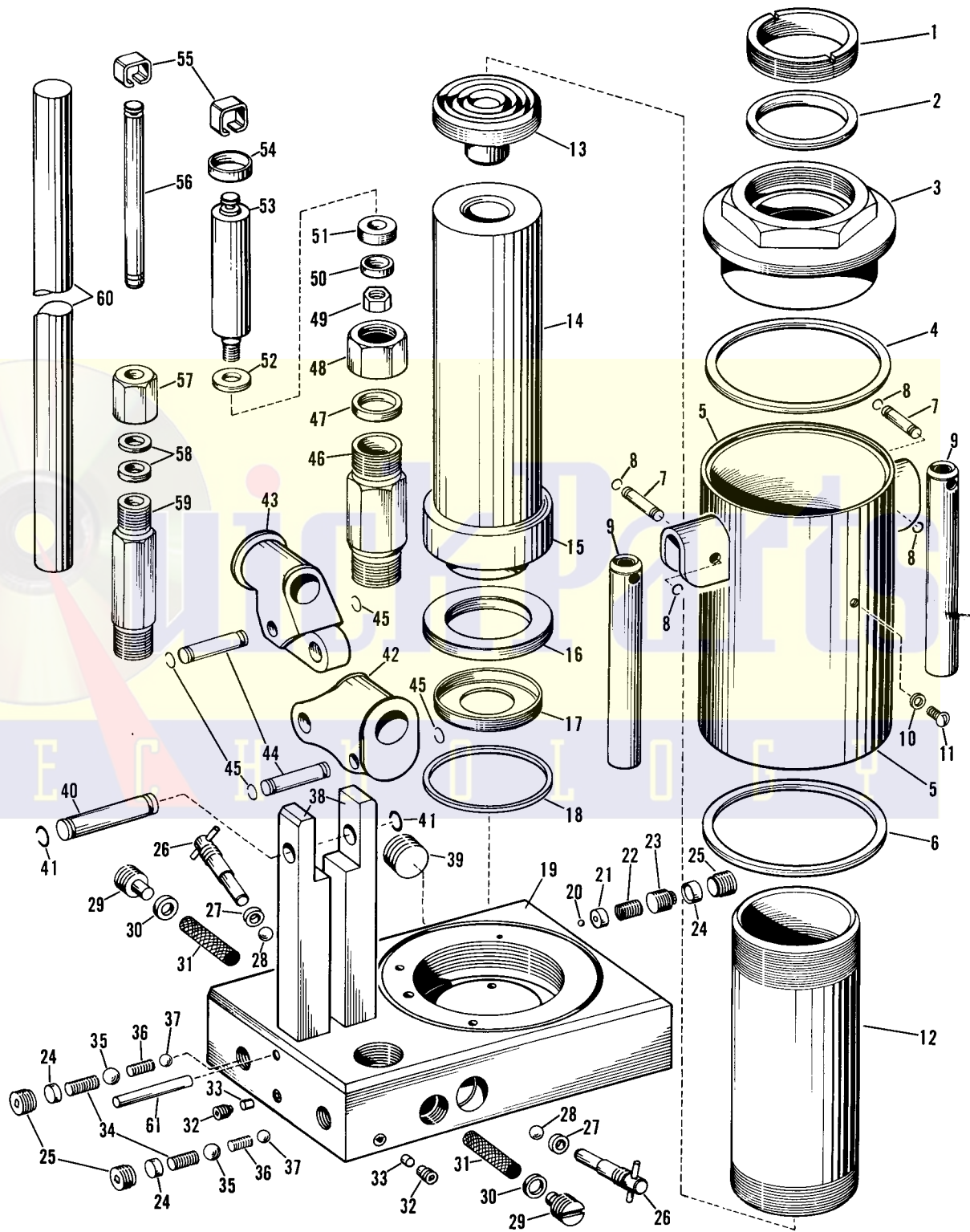


Master Copy

BLACKHAWK®

REPAIR PARTS SHEET
HAND JACK
MODEL GC-12
RATED CAPACITY
50-TON
Sheet No. S-149
Issued June, 1958



REPAIR PARTS SHEET FOR HAND JACK GC-12

Parts List on Reverse Side



PARTS LIST FOR MODEL GC-12

Item No.	Part No.	Description	Qty.	Item No.	Part No.	Description	Qty.
1	GC12.21	Gland Nut	1	32	NC12.06	Base Plug 5/16"	3
2	GC12.76	Plunger Packing	1	33	NC12.06B	Base Plug 7/32"	3
3	GC12.20	Top Cap	1	34	NC12.183D	Check Spring	2
4	GC12.504	Seal Ring	1	35	NC12.16C	Check Ball	2
5	GC12.25	Reservoir	1	36	NC12.183S	Intake Spring	2
6	GC12.504	Seal Ring	1	37	NC12.16S	Intake Ball	2
7	NC12.61	Pin	2	38	GC12.62	Link	2
8	NC12.545	5/16" Retaining Ring	4	39	NC12.245	Std. Pipe Plug	1
9	NC12.93	Carrying Handle	2	40	NC12.57L	Link Pin	1
10 } 11 }	NC12.22	Filler Plug & Gasket	1	41	NC12.545B	1/2" Retaining Ring	2
12	GC12.30	Cylinder	1	42	NC12.60P	Beam--Power	1
13	GC12.45	Saddle	1	43	NC12.60S	Beam--Speed	1
14	GC12.40	Plunger	1	44	NC12.57	Beam Pin	2
15	GC12.71	Disc	1	45	NC12.545	3/8" Retaining Ring	4
16	GC12.41	Plunger Cup	1	46	NC12.50S	Pump Cylinder--Speed	1
17	GC12.43	Spreader	1	47	NC12.75S	Pump Packing	1
18	NC12.511	Seal Ring	1	48	NC12.54S	Packing Nut--Speed	1
19	GC12.05A	Base	1	49	NC12.55S	Pump Cup Nut--Speed	1
20	NC12.16B	Ball--Safety	1	50	NC12.52S	Pump Spreader--Speed	1
21	NC12.274	Safety Valve Cap	1	51 } 52 }	NC12.535	Pump Cup & Washer--Speed	1
22	NC12.206	Safety Valve Spring	1	53	NC12.51S	Pump Plunger	1
23	NC12.232	Adjusting Plug	1	54	NC12.58	Sleeve	1
24	NC12.329	Valve Seal	3	55	NC12.26	Pump Clip	2
25	NC12.185	Pump Seal Plug	3	56	NC12.51P	Pump Plunger Assy	1
26	NC12.10A	Release Valve	2	57	NC12.54P	Packing Nut--Power	1
27	NC12.74	Release Packing	2	58	NC12.75P	Pump Packing	2
28	NC12.16R	Release Valve Ball	2	59	NC12.50P	Pump Cylinder--Power	1
29 } 30 }	NC12.150	Screen Plug & Washer	2	60	GC12.70	Handle	1
31	GC12.18	Screen	2	61	NC12.57B	Base Link Pin	1
					A569.026	Small Decal } Not	1
					A493.026	Large Decal } Shown	1

NOTE: No orders for parts can be filled unless both model and serial number with prefix, imprinted on nameplate of jack, are given.

GUARANTEE

Blackhawk guarantees its Hand Jacks, Service Jacks and Porto-Power against defects in workmanship and material for 90 days from date of delivery to the user. Only exception is Porto-Power chain, which follows the trade custom of its manufacturers and cannot be guaranteed.

When question of warranty arises, the user should send his unit to the nearest Blackhawk Franchised Service Depot for inspection, or to the Blackhawk Service Division, 5054 W. State St., Milwaukee 8, Wis.; transportation to be prepaid and evidence of delivery date furnished.

If the difficulty comes under the terms of our guarantee, we will repair or replace parts affected and return prepaid. Our guarantee does not cover ordinary wear and tear, abuse, misuse, overloading, altered products or use of improper fluid.

A Network of FRANCHISED SERVICE DEPOTS serves Blackhawk Users worldwide

For quality workmanship with genuine Blackhawk parts select a franchised Blackhawk Service depot for your repair work. Only repairs performed by a franchised service depot are backed with full factory guarantee. The Classified Section in your Phone Book lists your nearest Franchised Service Depot.

BLACKHAWK MFG. CO. - - - MILWAUKEE 46, WIS.