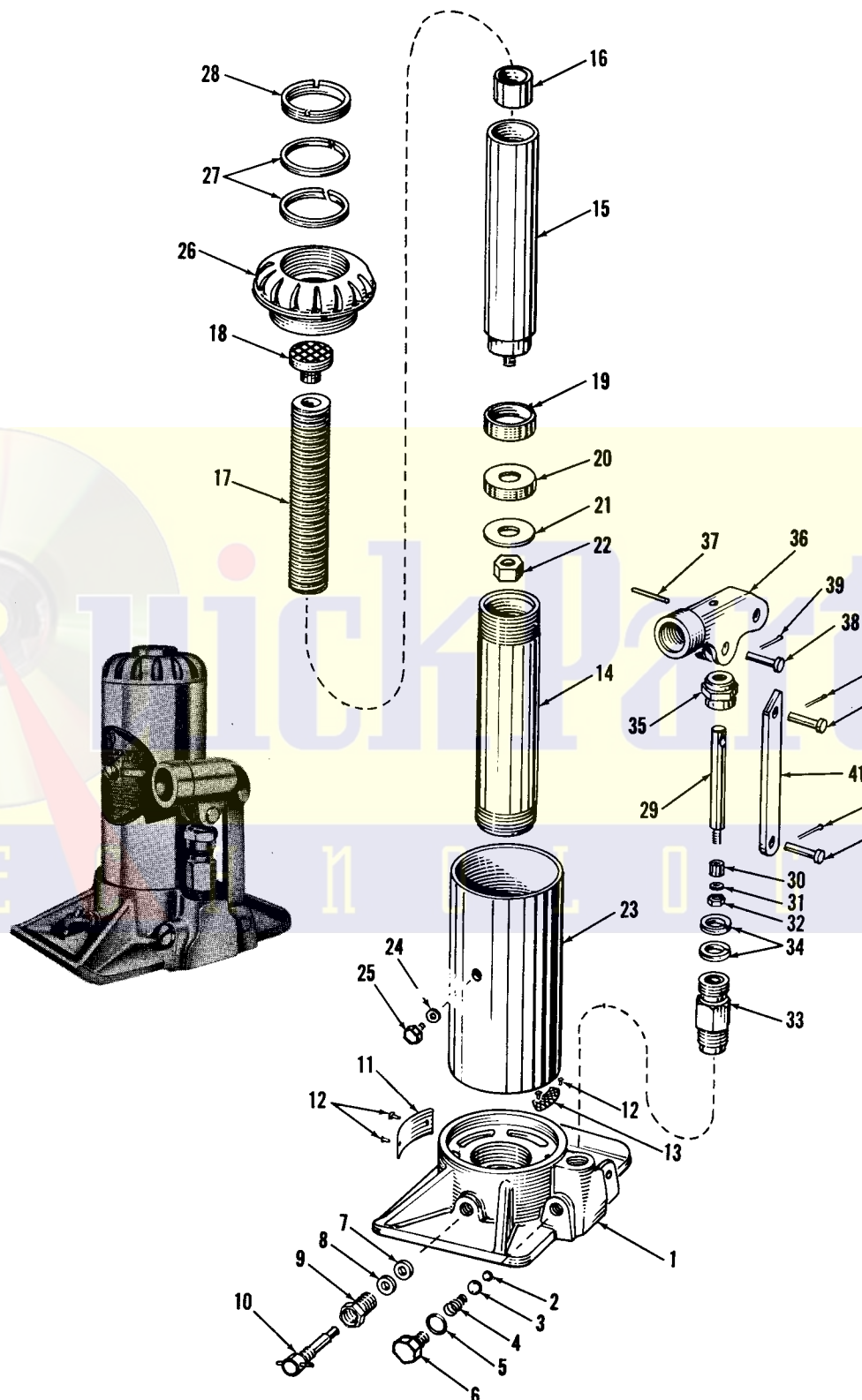


Master Copy

BLACKHAWK®

REPAIR PARTS SHEET
HAND JACK
MODEL CB-9D
RATED CAPACITY
8-TON

Sheet No. S-109
Issued February, 1959



REPAIR PARTS SHEET FOR CB-9D HYDRAULIC JACK

Parts List on Reverse Side



REPAIR PARTS LIST FOR CB-9D JACK

Item No.	Part No.	Part Name	No. Req.
1	CB9.05-3	Base	1
2	1.16	Valve Ball	1
3	SI.16	Valve Ball	1
4	BA85.183	Valve Outlet Spring	1
5	B159.167	Valve Plug Gasket	1
6	CB9.185-1	Valve Plug	1
7	CB9.335	Release Valve Packing Washer	1
8	1.74	Release Valve Packing	1
9	CB9.11-1	Release Valve Packing Nut	1
10	BA85.10A-1	Release Valve Spindle	1
11	B155.026	Name Plate	1
12	W78.03	Drive Screw	4
13	BA85.18-1	Oil Strainer Screen	1
14	CB9.30-2	Cylinder	1
15	AA85.40-3	Plunger	1
16	AA85.39	Plunger Sleeve	1
17	AA85.28-1	Plunger Adjusting Screw	1
18	AA85.45-1	Saddle	1
19	AA85.29-2	Plunger Ring	1
20	M73.41-1	Plunger Cup	1
21	AA85.43	Plunger Cup Washer	1
22	AA85.120	Plunger Cup Retaining Nut	1
23	CB9.25-2	Reservoir	1
24	C9.37	Filler Plug Gasket	1
25	C9.22-1	Filler Plug	1
26	CB9.20-3	Top Cap	1
27	CA11.76	Plunger Packing	2
28	AA85.21	Gland Nut	1
29	CB9.51-1	Pump Plunger	1
30	FI1.53	Pump Cup	1

Item No.	Part No.	Part Name	No. Req.
31	FI1.52	Pump Cup Spreader	1
32	CB9.55	Pump Cup Retaining Nut	1
33	CB9.50-1	Pump Cylinder	1
34	5.75	Pump Packing	2
35	CB9.54-1	Pump Gland Nut	1
36	CB9.60-2	Beam	1
37	CB9.61-2	Beam Handle Pin	1
38	CB9.57-1	Beam Pin	1
39	1.58	Cotter Pin	3
40	BA85.57-1	Base Link Pin	2
41	BA85.62-2	Link	1
	H12	Handle	1
		Blackhawk Oil No. LX21	
		¾ Pt. (21 Cu. In.)	
		SUB-ASSEMBLIES	
	CB9.05P-3	Tested Base items 1 thru 6 incl. also 12 & 13	
	AA85.40C-3	Complete Plunger items 15 thru 22 incl.	
	CB9.50A-1	Pump Cylinder & Plunger Complete items 29 thru 35 incl.	
	CB9.51A-1	Pump Plunger Complete items 29 thru 32 incl.	
	CB9.60A-2	Beam & Link Complete items 36 thru 41 incl.	
	CB9.60B-2	Beam & Beam Handle Pin items 36-37	

NOTE: Orders for parts cannot be filled unless both model and serial number with prefix, imprinted on nameplate of ram, are given.

GUARANTEE

Blackhawk guarantees its Hand Jacks, Service Jacks and Porto-Power against defects in workmanship and material for 90 days from date of delivery to the user. Only exception is Porto-Power chain, which follows the trade custom of its manufacturers and cannot be guaranteed.

When question of warranty arises, the user should send his unit to the nearest Blackhawk Franchised Service Depot for inspection, or to the Blackhawk Service Division, 5054 W. State St., Milwaukee 8, Wis.; transportation to be prepaid and evidence of delivery date furnished.

If the difficulty comes under the terms of our guarantee, we will repair or replace parts affected and return prepaid. Our guarantee does not cover ordinary wear and tear, abuse, misuse, overloading, altered products or use of improper fluid.

A Network of FRANCHISED SERVICE DEPOTS serves Blackhawk Users worldwide

For quality workmanship with genuine Blackhawk parts select a franchised Blackhawk Service depot for your repair work. Only repairs performed by a franchised service depot are backed with full factory guarantee. The Classified Section in your Phone Book lists your nearest Franchised Service Depot.

BLACKHAWK MFG. CO. - - - MILWAUKEE 46, WIS.