

## INSTRUCTION MANUAL REPAIR PARTS LIST

AIR / HYDRAULIC TRUCK JACK  
AIR / HYDRAULIC TRUCK JACK

20 TON (19958 Kg.) CAPACITY  
20 TON (19958 Kg.) CAPACITY

MODEL B67413  
MODEL B67415



### WARNING

1. STUDY, UNDERSTAND AND FOLLOW ALL INSTRUCTIONS PROVIDED WITH THIS JACK PRIOR TO OPERATION.
2. THIS EQUIPMENT IS DESIGNED FOR LIFTING PURPOSES ONLY - NOT FOR SUPPORTING LOADS. WHILE LIFTING, POSITION APPROPRIATE CAPACITY VEHICLE STANDS AND EXTEND THEM IN STAGES TO MAINTAIN A MINIMUM DISTANCE BETWEEN LOAD AND STANDS.
3. DO NOT MOVE OR DOLLY THE VEHICLE WHILE ON THE JACK.
4. DO NOT OVERLOAD. LIFT THE VEHICLE ONLY AT AREAS SPECIFIED BY THE MANUFACTURER.
5. USE ONLY ON HARD LEVEL SURFACE CAPABLE OF SUSTAINING THE LOAD.
6. CENTER LOAD ON SADDLE.
7. DO NOT OPEN FILLER PLUG FOR ANY REASON UNLESS JACK IS FULLY LOWERED AND AIR SUPPLY HAS BEEN DISCONNECTED.
8. IT IS YOUR RESPONSIBILITY TO KEEP WARNING DECALS LEGIBLE AND INTACT. REPLACEMENT DECALS MAY BE OBTAINED FROM THE FACTORY.
9. FAILURE TO HEED THESE WARNINGS MAY RESULT IN LOSS OF LOAD, DAMAGE TO THE JACK OR FAILURE RESULTING IN PROPERTY DAMAGE, PERSONAL OR FATAL INJURY.

61986913

### OWNER'S RESPONSIBILITY

**Operation.** The owner and/or operator shall have an understanding of these operating instructions and warnings before operating this jack. Warning information shall be emphasized and understood. If the user is not fluent in English, the instructions and warnings shall be read to and discussed with the operator in the operator's native language by the purchaser/owner, making sure that the operator comprehends its contents.

**Maintenance.** This jack shall be maintained in accordance with instructions listed under "Maintenance."

#### Inspection

1. Visual inspection shall be made before each use of the jack, checking for leaking hydraulic fluid, and damaged, loose or missing parts.
2. Each jack shall be inspected by an authorized service center immediately, if subjected to an abnormal load or shock.
3. Owners and/or users should be aware that repair of this

equipment may require specialized knowledge and facilities. It is recommended that an annual inspection of the jack be made by an authorized service center and that any defective parts, decals or warning labels be replaced with genuine factory parts. A list of authorized service centers is available from the factory.

**Damaged Jacks.** Any jack which appears to be damaged in any way, is found to be badly worn, or operates abnormally SHALL BE REMOVED FROM SERVICE until necessary repairs are made by an authorized service center.

### INSTRUCTIONS BEFORE USE

1. Remove square head shipping plug from reservoir, and replace with elbow (item 33). Install air line to elbow.
2. Remove filler screw and check oil level. With ram in down position, it should be just up to the hole. Fill if necessary with clean hydraulic jack oil. Never use brake fluid.
3. Occasionally jacks become "airbound" during transit. To remove air from hydraulic system, open release valve by turning knob on top of handle counterclockwise. With air supply connected, activate air valve for 10 - 15 seconds. Close release valve and check for normal operation.
4. Check air supply pressure. System must have at least 100 PSI and 10 C.F.M. to obtain rated capacity.



### WARNING

**USE THIS JACK IN THE  
UPRIGHT POSITION ONLY.**

### OPERATING INSTRUCTIONS

1. **Lifting.** Attach air supply to control valve and close release valve. Position jack where desired and adjust extension screw if necessary. Activate air/hydraulic pump by pressing on control valve until desired height is reached. Jack will hold load even if air supply is removed.



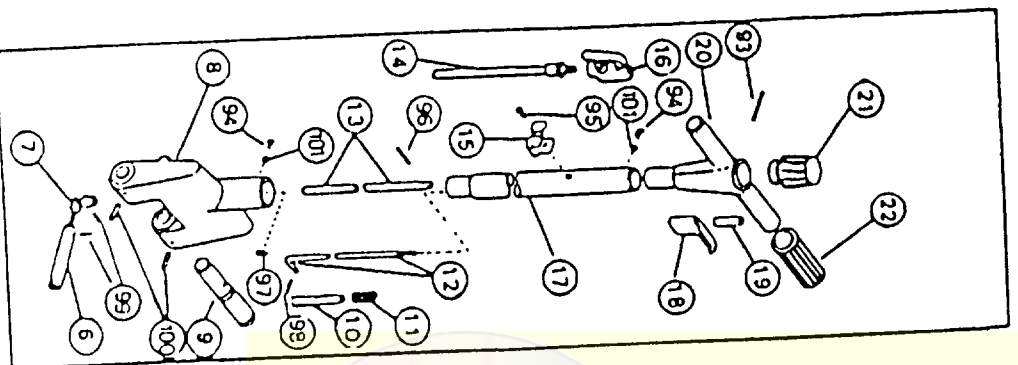
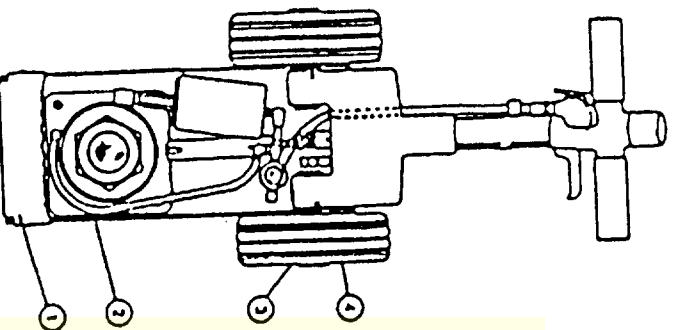
### WARNING

**USE JACK FOR LIFTING ONLY.  
ALWAYS SUPPORT VEHICLE BY  
OTHER APPROPRIATE MEANS.**

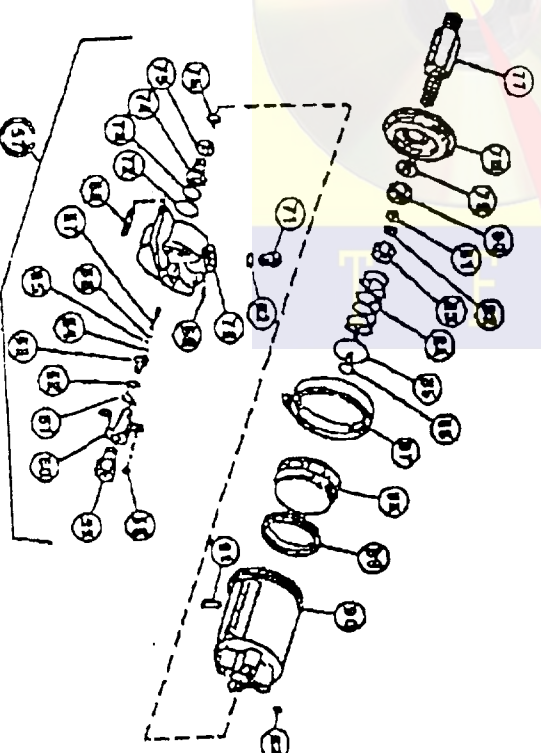
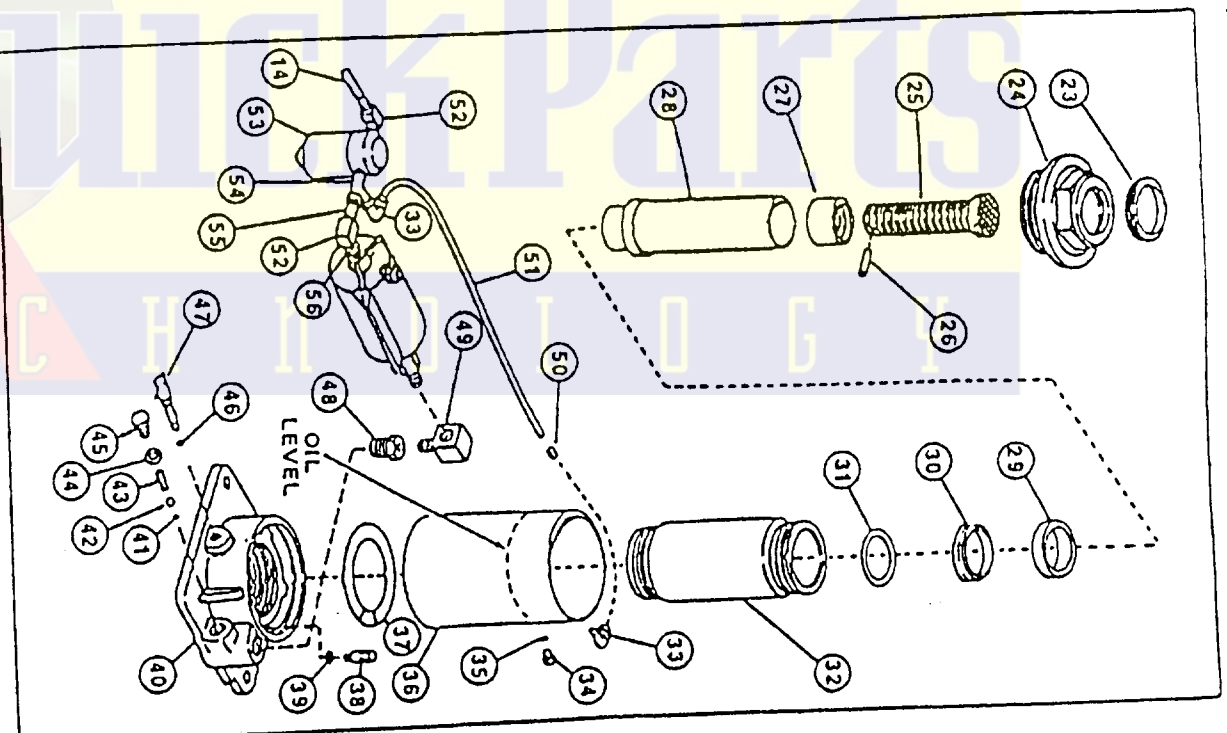
2. **Lowering.** Ram will lower when release valve is opened.

## MAINTENANCE

1. Regularly check oil level. Use only hydraulic jack oil - never use alcohol or hydraulic brake fluid.
2. Check screen of air inlet of air valve. Clean as required.



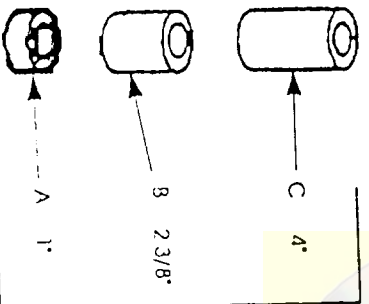
3. The air filter located under the cover should be cleaned periodically. To clean, unscrew plastic filter bowl and wash with mild soap and water. Filter element should be washed in denatured alcohol. Blow out filter body with compressed air.



# AIR / HYDRAULIC TRUCK JACK PARTS LIST

ITEM NO.	PART CODE	DESCRIPTION	QTY. REQUIRED	ITEM NO.	PART CODE	DESCRIPTION	QTY. REQUIRED
1.	12000002	Top Cover	1	53	BJ792018	Filter Assembly	1
2.	BJ511626	Frame	1	54.	BK264096	Tee	1
3.	BB557523	Retaining Ring	1	55.	BJ790096	Nipple	1
4.	BE587106	Wheel	1	56.	BJ780039	Bushing	1
6.	BK901038	Release Valve Adaptor	1	57.	BK210950	Air Motor Assembly	1
7.	BJ396900	Universal Joint	1	58.	BCR50028	Screw	4
8.	BA707133	Yoke	1	59.	BCR80340	Coupler	1
9.	BJ395104	Axle	2	60.	BCR49098	Retaining Cover	1
10.	BA766061	Segment Pin	1	61.	BCH50044	Retaining Ring	1
11.	BA768141	Segment Spring	1	62.**	B1220503	O - Ring	2
12.	BA961142	Segment Pin Rod	1	63.	C8256018	Filter	1
13.	BK110400	Release Rod	1	64.**	BCH34808	Grommet	1
14.	BJ354646	Air Hose	1	65.	BCH79039	Bushing	1
15.	BK591110	Air Valve Bracket	1	66.**	B1001503	O - Ring	1
16.	35100007	Air Valve	1	67.	BCH45040	Plunger	1
17.	17000003	Handle Tube	1	68.	B7000381	Tubing	1
18.	BA963144	Segment Lever	1	69.	B1040057	Spring Pin	2
19.	BD894055	Segment Rod Nut	1	70.	CR500098	Cover	1
20.	BA962135	Cross Handle	1	71.	C8116006	Plug	1
21.	BK130800	Release Knob	1	72.	BK898041	O - Ring	1
22.	BA725550	Handle Grip	2	73.	CM322041	O - Ring	1
23.*	NJ100046	Quod Ring	1	74.	C8121051	Piston	1
24.	BJ398020	Top Cap	1	75.	CB644108	Back - Up Washer	1
25.	21101313	Adj. Screw (67413 only)	1	76.	CF157028	Pon Head Screw	1
26.	BJ382028	Adj. Screw (67415 only)	1	77.	BK520400	Plunger Body	1
27.	BD674061	Pin	1	78.	BK261101	Pile	1
28.	BJ385446	Plunger Sleeve	1	79.	BK361080	Lockwasher	1
29.*	14000011	Plunger (67413 only)	1	80.	BK350550	Hex Nut	1
30.*	36400011	Plunger (67415 only)	1	81.**	CB918041	U - Cup	1
31.*	31500005	Beaing	1	82.	BK110390	Back - Up Bushing	1
32.	H2348500	U - Cup	1	83.	BK340550	Hex Gland Nut	1
33.	13000011	Retaining Ring	1	84.	CH210110	Spring Cap	1
34.*	BJ390030	Cylinder (67413 only)	1	85.	BK110800	Plunger	1
35.*	BJ990096	Cylinder (67415 only)	2	86.	CB180040	Body Retainer	1
36.	AJ100020	Mole Elbow	1	87.	CB219044	Piston	1
37.	BJ389025	Filler Plug	1	88.	CB109051	U - Cup	1
38.	BK810800	Filler Plug Gasket	1	89.**	C8808041	Cylinder	1
39.	BK876900	Reservoir (67413 only)	1	90.	13000007	Seal	1
40.	BS303700	Reservoir (67415 only)	1	91.**	C8919041	O - Ring	1
41.	BK55005P	Washer	1	92.**	B1004503	Pin	1
42.	H0334500	Relief Valve	1	93.	BA954058	Screw	4
43.	H0256900	Washer	1	94.	BA953252	Screw	1
44.	AJ100039	Base W/Plug	1	95.	SJ100374	Pin	1
45.	BK300600	Boil 7/32" Dia.	1	96.	BD184061	Nut	2
46.*	H6562900	Boil 5/16" Dia.	1	97.	SJ100420	Cover Pin	1
47.	BK490010	Volve Spring	1	98.	AJ100032	Pin	1
48.	BJ580096	Volve Plug Gasket	1	99.	BD374061	Pin	2
49.	BK729100	Release Valve O - Ring	1	100.	H1485000	Washer	4
50.	BK102700	Release Spindle	1	101.	BD914108	Product Decal (not shown)	1
51.	BK964600	Pump Nipple	1	102.	B7125619	67413 ONLY	1
52.	BJ479096	Steel Elbow	2	102	BK350640	Product Decal (not shown)	1
				103.	61986913	Warning Decal(not shown)	1
				104.	61985573	Handle Decal (not shown)	1
				A.	B7067211	Short Extension Accessory	
				B.	B7066211	Medium Extension Accessory	
				C.	B7065211	Long Extension Accessory	

## ACCESSORY ITEMS



- \* Items included in Jack Repair Kit B67415X1
- \*\* Items included in Air Motor Repair Kit 81735002
- Handle Assembly (ress items 9,14,15) BK216950
- Filter Repair Kit J792018X
- Filter Bowl Only BK953025

Service and Service Parts are only available through your local Authorized Service Center.

## TROUBLESHOOTING

### Cause - Solution

Jack will not lift load.	Jack will not lower completely	Pump feels spongy	Cause - Solution	
			Cause	Solution
✓			1. Release valve must be closed.	
✓			2. Low air pressure. System pressure must be at least 100PSI to obtain rated capacity.	
	✓		3. Release valve must be open.	
✓	✓		4. Air filter may be plugged. Check and /or clean if necessary (under cover).	
		✓	5. Squirt a few drops of oil in the air intake and operate at no load for a few seconds. This is usually not necessary if your in-line lubricator is operating correctly.	

If the above procedures do not remedy the problem, the jack will require service and should be taken to an authorized service center for repair.

## LIMITED WARRANTY

Lincoln, a Division of McNeil (Ohio) Corp., a subsidiary of Pentair, Inc., warrants that jacks and related service equipment sold with the brand-names Lincoln, Blackhawk Automotive, Blackhawk Automotive Banner, Blackhawk Automotive Porto-Power, Hein-Werner Automotive, Hein-Werner Automotive Winner will be free from defects in material and workmanship during the one (1) year following the date of purchase. This warranty is extended to the original retail purchaser only. If a jack or related service equipment proves to be defective during this warranty period, it will be repaired or replaced without charge. To obtain repair or replacement, it must be shipped, transportation charges prepaid, with proof of date of purchase to a Lincoln authorized Warranty and Service Center, within one (1) year following the date of purchase. This warranty does not apply to parts damaged from accident, overload, or abuse, nor does it apply to any equipment which has been altered or used with special attachments other than those recommended by Lincoln. No other express warranty applies to jacks and related service equipment manufactured by Lincoln. ANY IMPLIED WARRANTIES applicable to jacks and related service equipment A PARTICULAR PURPOSE, WILL LAST ONLY FOR ONE (1) YEAR FROM THE DATE OF PURCHASE. SOME STATES DO NOT ALLOW LIMITATIONS ON HOW LONG AN IMPLIED WARRANTY LASTS, SO THE ABOVE LIMITATION MAY NOT APPLY TO YOU. In no event shall Lincoln be liable for incidental or consequential damages. The liability of Lincoln on any claim for loss or damage arising out of the sale, resale, or use of a jack or related service equipment shall in no event exceed the purchase price. SOME STATES DO NOT ALLOW THE EXCLUSION OR LIMITATION OF INCIDENTAL OR CONSEQUENTIAL DAMAGES, SO THE ABOVE LIMITATION OR EXCLUSION MAY NOT APPLY TO YOU. THIS WARRANTY GIVES YOU SPECIFIC LEGAL RIGHTS, AND YOU MAY ALSO HAVE OTHER RIGHTS WHICH VARY FROM STATE TO STATE.

Service beyond the warranty period is available through a nationwide system of Authorized Service Centers which are carefully selected by Blackhawk. A current list of Authorized Service Centers is available from the factory.

**LINCOLN**

® A PENTAIR COMPANY

One Lincoln Way  
St. Louis, Missouri 63120-1578  
Customer Service, (314) 679-4300