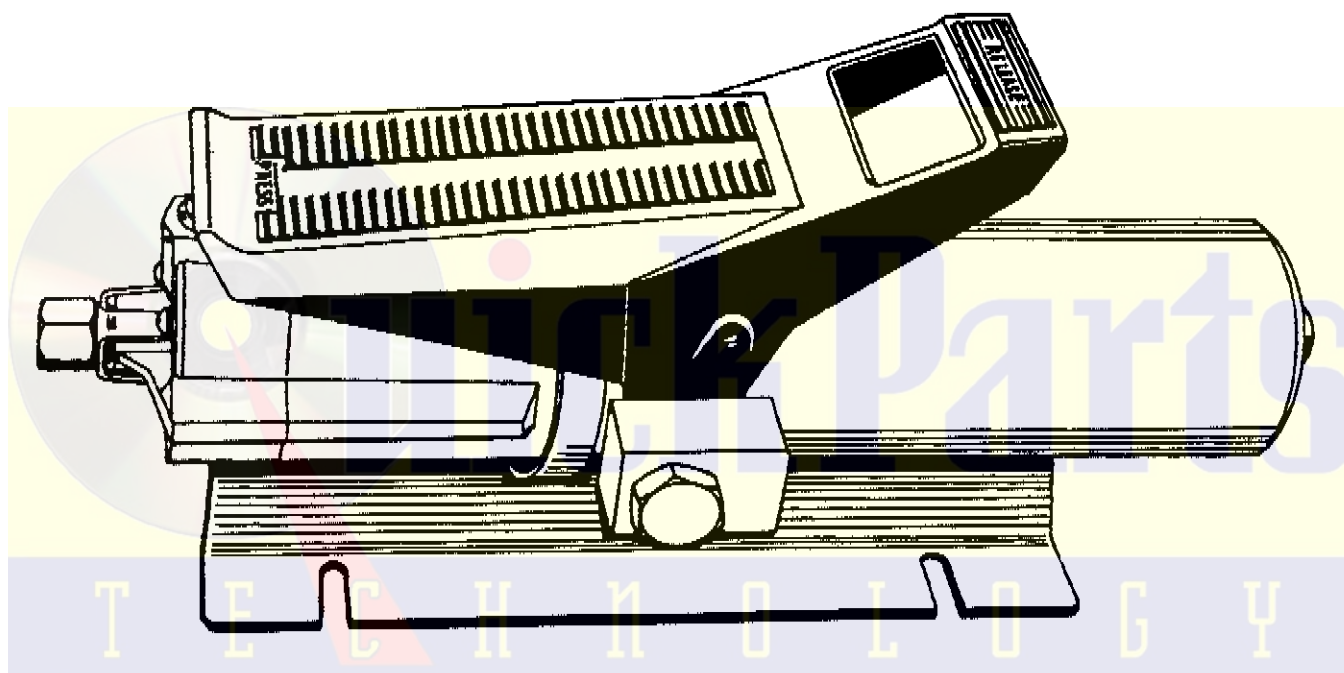


GENUINE FACTORY PARTS**SERVICE PARTS SHEET****MODEL: B65426,
B65428, & 91-125**

AIR-HYDRAULIC PUMP- SERIES A



TO PROTECT YOUR WARRANTY, USE ONLY
APPROVED HYDRAULIC OIL

INSTALL ALL KIT COMPONENTS TO INSURE OPTIMUM PERFORMANCE OF THE REPAIRED PUMP.

ITEM NO.	PART NO.	QTY.	DESCRIPTION	FIGURE NO.
1	CB241218	1	TREADLE	
2	CB318028	4	CAP SCREW	
3	"	1	O-RING	
4	"	1	BALL SEAL	
5	"	4	GASKET	
6	246485	1	RELEASE GUIDE ASSY.	2
7	"	2	BALL	
8	"	1	GASKET	
9	"	1	FILTER	
10	CF692950	1	COUPLER ASSEMBLY	3
11	" B1014565	1	BACK-UP WASHER	
12	"	1	BALL	
13	CH411013	1	BALL GUIDE	
14	CB219044	1	COUPLING V-RETAINER	
15	A8009108	1	WASHER	
16	CH210110	1	SPRING	
17	CH203950	1	HYD CYLINDER ASSY.	5
18	CB180040	1	PLUNGER	
19	"	2	BALL SEAT	
20	BCJ37950	1	HYD BODY ASSY.	
21	247054	1	AIR MOTOR ASSY.	6
22	"	1	PLUG	
23	CH202950	1	RELIEF VALVE ASSY.	4
24	"	1	BALL SEAT	
25	246482	1	RESERVOIR ASSY.	
26	CF668006	1	RESERVOIR CAP	
27	CB108005	1	BASE	
28	B1320028	2	SCREW	
29	"	1	CONICAL SPRING	
30	▲ 246492	1	Filter	

NOTE: Reservoir fill plug (Item 26) should be **HAND TIGHTENED ONLY**. **DO NOT** use a pair of pliers or wrench. **OVER-TIGHTENING WILL TEAR THE RESERVOIR BLADDER**. Oil leaking out of the vent hole located at the rear of the reservoir is an indication of a torn bladder.

NOTE: Assembly ball guide (Item 13) with outside chamfer facing ball seat (Item 19).

NOTE: Closed end of spring (Item 29) must go toward the bottom of the hole.

NOTE: Torque Coupling V-Retainer (Item 14) to 30-40 in.-lbs.

NOTE: Torque items 10, 17, and 23 to 25 ft.-lbs.

NOTE: Relief Valve (Item 23) is factory set for maximum pressure according to pump model. **DO NOT** adjust to a higher pressure.

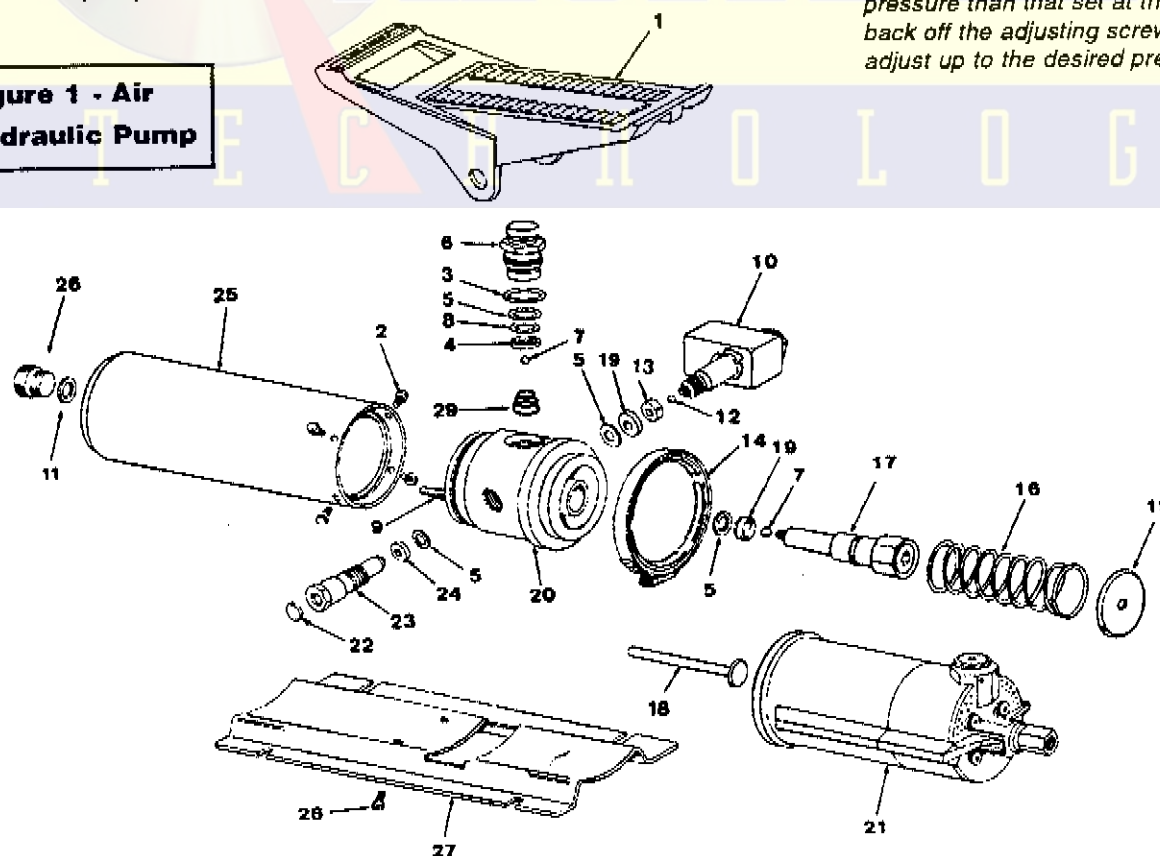
(*) Indicates items included in and available only as part of Pump Repair Kit 246483.

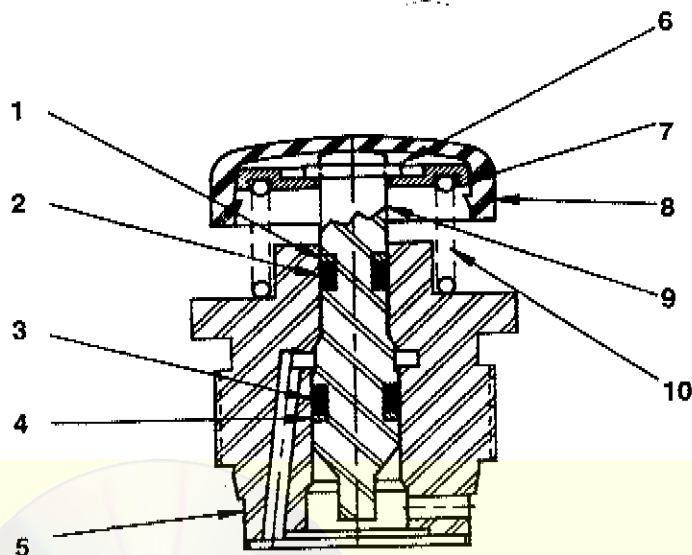
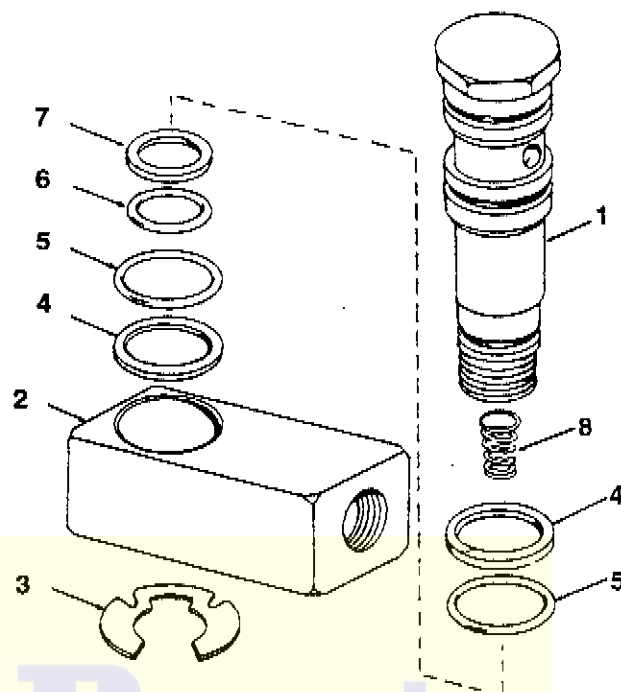
(▲) Indicates items are not shown on the detail.

NOTE: The back-up washer, Item 11 (P/N B1014565) may be purchased separately from Pump Repair Kit 246483.

When setting the relief valve, it should only be adjusted up to the desired pressure setting. To adjust for a lower pressure than that set at the factory, back off the adjusting screw and then adjust up to the desired pressure.

Figure 1 - Air Hydraulic Pump



**Figure 2 - Release Plunger****Figure 3 - Swivel Coupler Assembly**

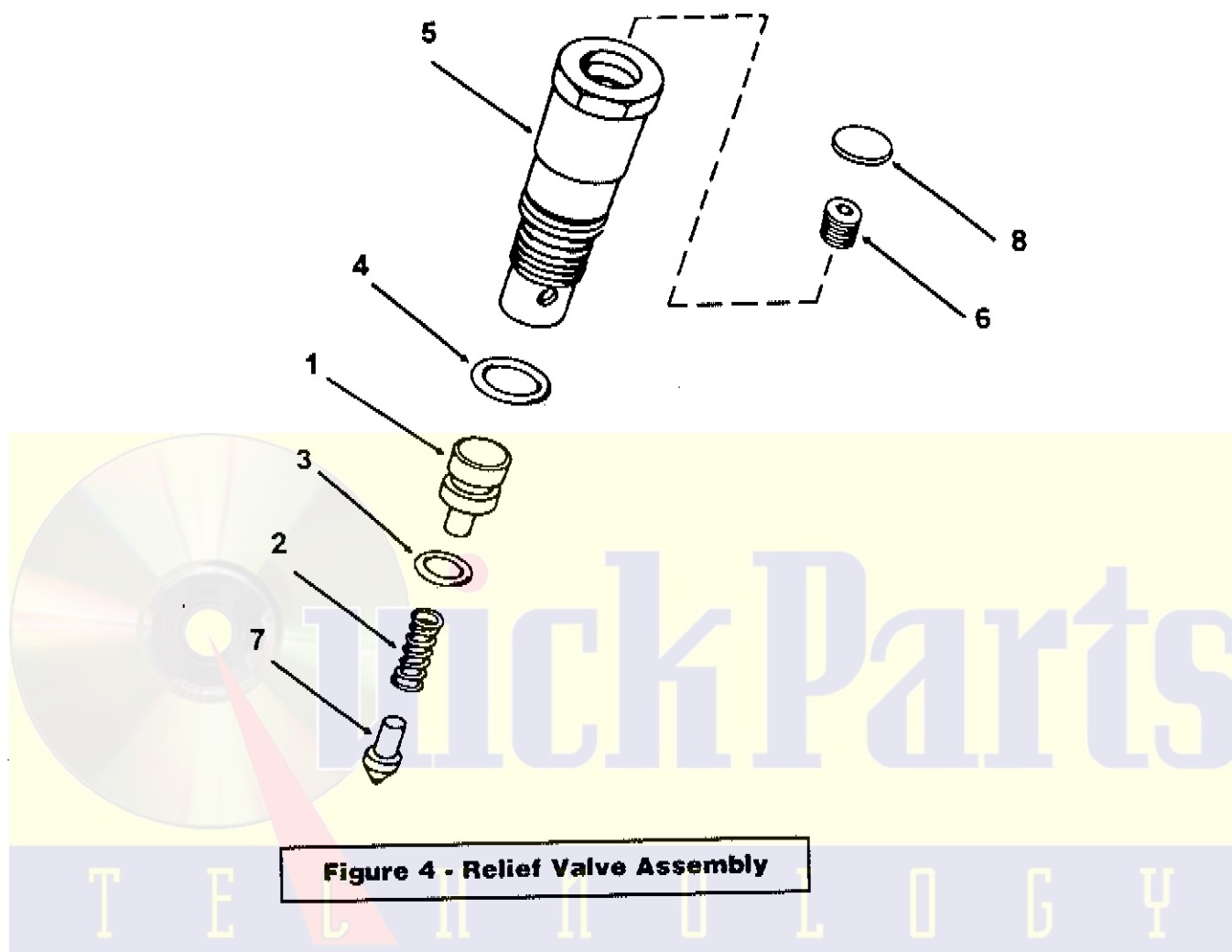
ITEM NO.	PART NO.	QTY.	DESCRIPTION
1	*2	1	BACK-UP WASHER
2	*2	1	O-RING
3	*2	1	O-RING
4	*2	1	BACK-UP WASHER
5	246485	1	RELEASE GUIDE ASSY.
6	*2	1	RETAINING RING
7	246501	1	SPRING WASHER
8	*2	1	CAP
9	246494	1	RELEASE PLUNGER
10	*2	1	SPRING

(*2) Items included in and available only as part of Release Plunger Kit 246484. The Release Plunger Repair Kit (246484) and Release Guide Assembly (246485) also include Items 3, 4, 5, 7, 8, and 29 from the Air Pump Assembly (Figure 1).

ITEM NO.	PART NO.	QTY.	DESCRIPTION
1	CJ205416	1	COUPLER STEM
2	CJ204190	1	COUPLER BODY
3	*3	1	RETAINING RING
4	*3	2	BACK-UP WASHER
5	*3	2	O-RING
6	*3	1	O-RING
7	*3	1	BACK-UP WASHER
8	*3	1	SPRING

(*3) Items included in and available only as part of Swivel Coupler Kit 246486. The Swivel Coupler Kit (246486) also contains Items 5, 12, and 19 from the Air Pump Assembly (Figure 1).

NOTE: Pumps manufactured prior to November, 1991 have a release plunger assembly that uses a roller in place of the cap now being used. The roller, Dowel pin, and spring washer are available for service in Roller Replacement Kit 246487. To replace the release plunger or release body, order a complete assembly (P/N 246485).



ITEM NO.	PART NO.	QTY.	DESCRIPTION
1	A8005007	1	PLUG
2	*4	1	SPRING
3	*4	1	O-RING
4	*4	1	O-RING
5	CH202950	1	RELEASE VALVE ASSY.
6	BL860280	1	SET SCREW
7	CH180950	1	BALL GUIDE ASSY.
8	*4	1	PLUG

(*4)Included in and available only as part of Relief Valve Repair Kit 246490.
The Relief Valve Repair Kit also includes Item 5 and 24 from the Air Pump Assembly, Figure 1.

NOTE: Relief Valve Repair Kit 246490 contains two sizes of spring (Item 2). Use the spring from the kit that matches the spring removed from the relief valve.

Repair Kit 246483 includes (1) 246490.

NOTE: Relief valve adjustments should only be performed by an Authorized Service Center utilizing prescribed procedures and proper test equipment.

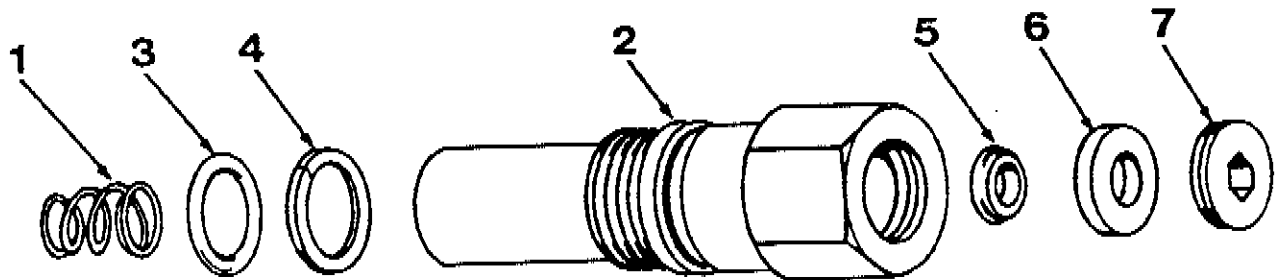


Figure 5 - Hydraulic Cylinder

ITEM NO.	PART NO.	QTY.	DESCRIPTION
1	*5	1	SPRING
2	CH203950	1	HYDRAULIC CYLINDER ASSEMBLY
3	*5	1	O-RING
4	*5	1	BACK-UP WASHER
5	*5	1	U-CUP
6	*5	1	BACK-UP WASHER
7	*5	1	BEARING RETAINER

(*5)Included in and available only as part of Hydraulic Cylinder Repair Kit 246491.
Hydraulic Cylinder Repair Kit 246491 also includes Items 5, 7, and 19 from the Air Pump Assembly (Figure 1).

Repair Kit 246483 includes (1) 246491.